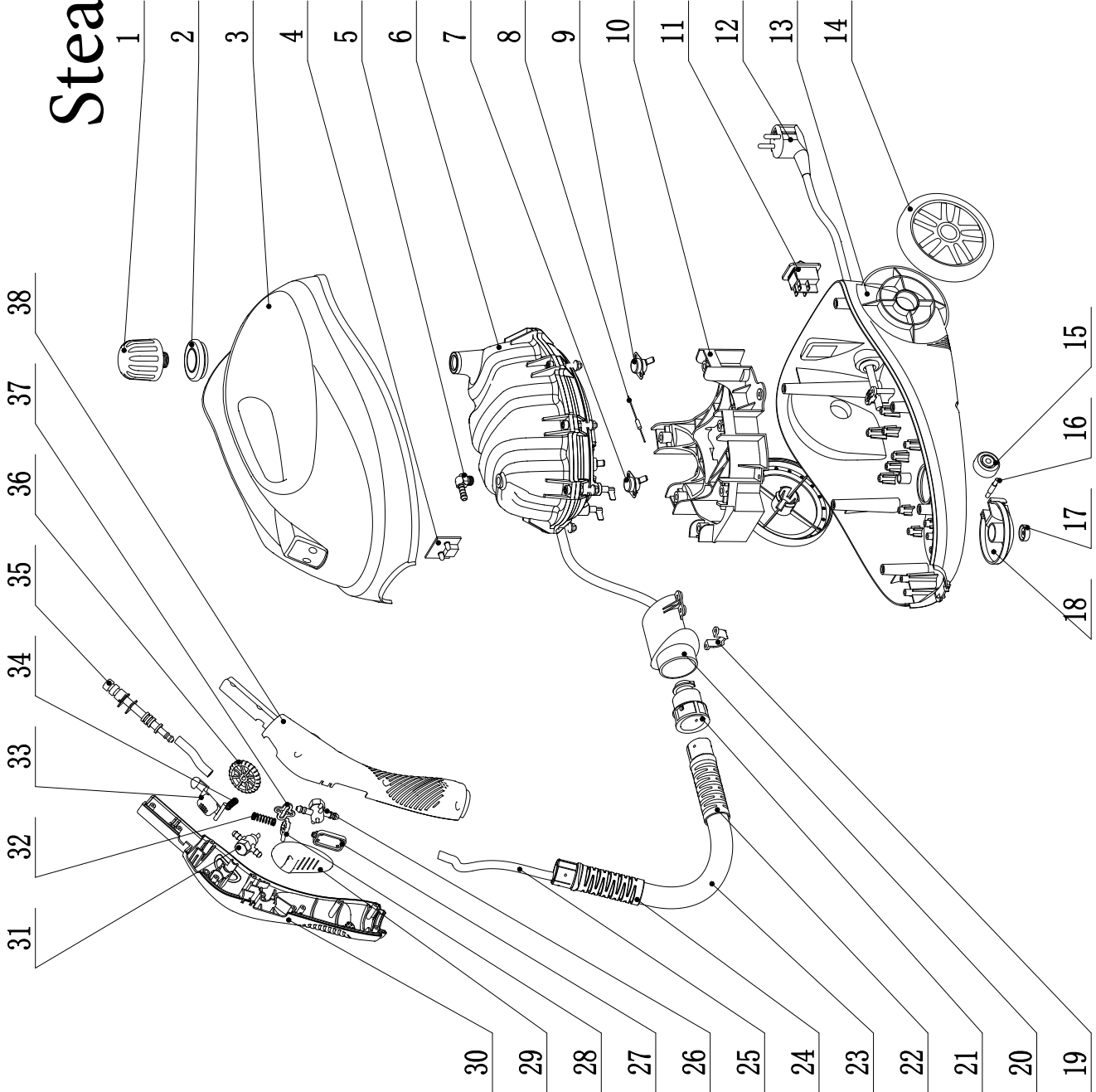


# 82104368

## Steamclean Caddy XL



No.	Part Name	Material	Qty.	Remark	
38	Right handle	PA66+GF30	1		
37	Holder of children lock	PA66+GF30	1		
36	Adjusting wheel	PA66+GF30	1		
35	Nozzel	PA66+GF30	1	1.5mm copper nozzle	
34	Spring of lock	Stainless	1	90.7*Ø7*19	
33	Lock	PA66+GF30	1		
32	Spring of button	Stainless	1	90.7*Ø8*27	
31	Steam adjustable button	PA66+GF30	1	silicon inside	
30	Left handle	PA66+GF30	1		
29	Steam trigger	PA66+GF30	1		
28	Children lock	PA66+GF30	1		
27	Cover of trigger	PA66+GF30	1		
26	Relief valve	PA66+GF30	1	spring, silicon, copper inside	
25	Steam pipe	silicon+double unit	1	Ø5*Ø9*1900mm	
24	Protector of pipe	PP	1		
23	Spiral pipe	PVC+铜丝	1	Ø20.5*1500mm	
22	Protector of pipe	PP	1		
21	Connector of boiler of steam pipe	PA66+GF30	1		
20	Holder of connector universal wheel	PA66+GF30	1		
19	Holder of universal wheel	ABS	1		
18	Holder of universal wheel	ABS	1		
17	Small shaft	ABS	1		
16	Small roller	ABS+TPR	1		
15	Wheels	ABS+TPR	1		
14	Bottom case	ABS	1		
13	Power cord	VDE 250V 16A	1	3×1.0mm <sup>2</sup> 4m	
12	Power switch	RI1	1	16A 250V	
11	Holder of boiler	PA66+GF30	1		
10	Temperature controller	KSD301	1	10A 165°C	
9	Fuse	BF216	1	AC250V 10A T216	
8	Temperature controller	KSD301	1	10A 145°C	
7	Boiler	Aluminum	1	230V 2000W 1.8L	
6	Copper connector	copper	1	G1/8	
5	Light board	PP	1	68×26	
4	Upper cover	silicon	1		
3	Seal for water filling	PA66GF30+copper	1		
2	Safety valve	Material	1	7.5-8.5bar	
1	No.	Part Name	Material	Qty.	Remark