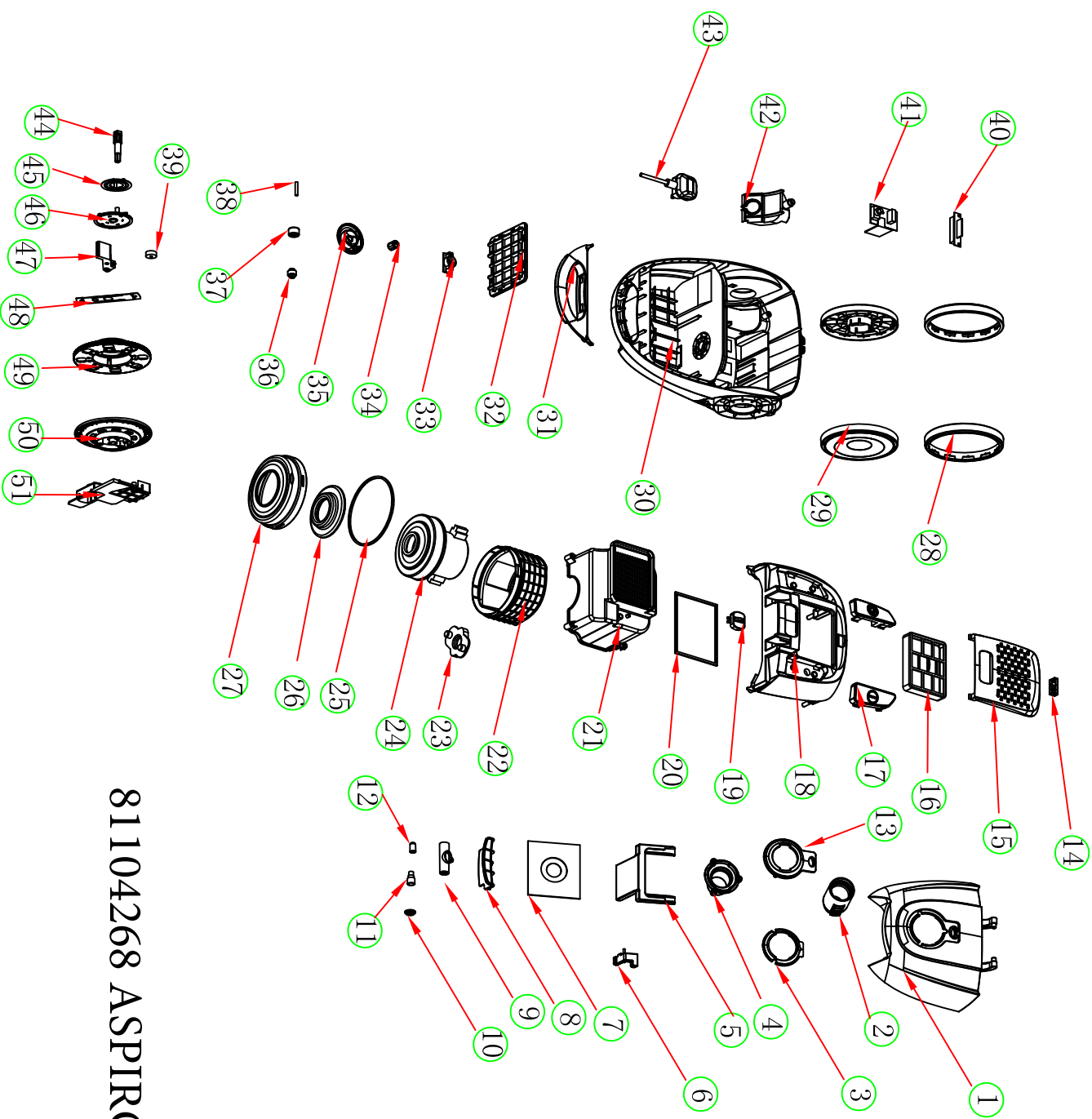


# 81104268 ASPIROVAC COMPACT

No	name
1	front cover
2	suction case (on hose)
3	suction base sealing
4	suction base
5	dustbag holder
6	dustbag missing protection
7	dust bag
8	front cover lamp
9	dust full tube
10	dust full cap
11	dust full blue float
12	dust full red float
13	suction base cover
14	air outlet frame lock
15	air outlet frame
16	hepa frame
17	on/off switch button
18	rear cover
19	speed control button/cover
20	hepa sealing
21	motor out cover
22	motor inner cover
23	motor buffer
24	motor
25	inner cover sealing
26	motor sealing
27	motor front cover
28	rear wheels cover (rubber)
29	rear wheels
30	base
31	handle cover
32	air inlet frame
33	safety valve cover
34	valve piston
35	swivel wheelframe
36	small wheel
37	small wheel rubber cover
38	small wheel axle
39	break( for cord rewinder )
40	Potentiometer( speed control , but fixed speed version, no such part)
41	PCB
42	cable outlet frame
43	cable
44	cable outlet axle
45	cooper ring( on cable rewinder)
46	cooper ring holder
47	break holder( on cable rewinder)
48	rewinder spring fixture
49	rewinder base 1
50	rewinder base 2
51	wire connection adaptor



81104268 ASPIROVAC COMPACT